

# TR200/220

## SURFACE ROUGHNESS TESTER

### Standard Delivery

- Main unit 1
- TS100 standard pickup 1
- Specimen Ra 1
- Protection nose 1
- Steel support 1
- Screwdriver 1
- Communication cable 1
- Instruction Manual 1
- Software 1
- TIME Certificate 1
- Warranty card 1

### Optional Accessories

- TS110 pickup for curved surface 1
- TS120 pickup for small holes 1
- TS130 pickup for deep grooves 1
- TS140 right-angled pickup 1
- Measuring platform TA610/TA620 1
- Leveling table TA630/TA631 1
- Magnetic stand 1
- Steel adapter (Ø8) 1
- Steel adapter (L-attachment) 1
- Printer TA230 1



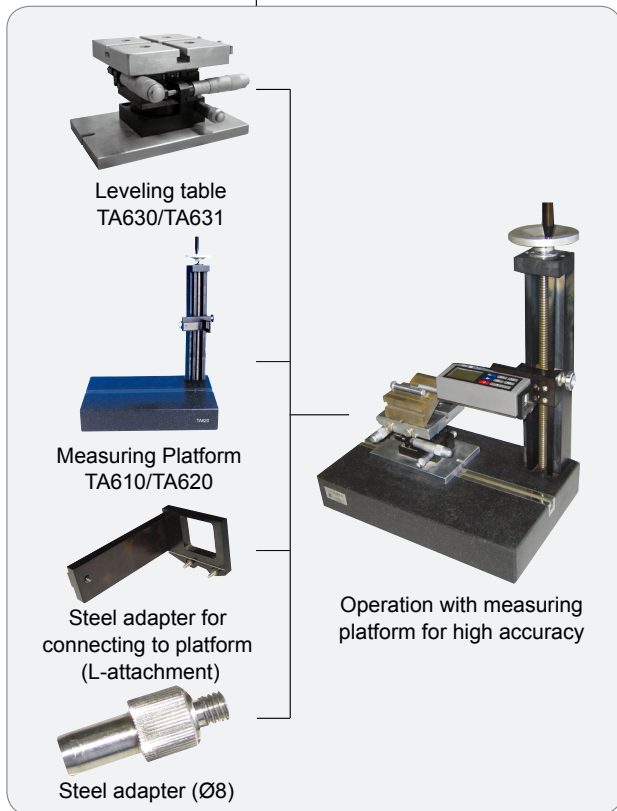
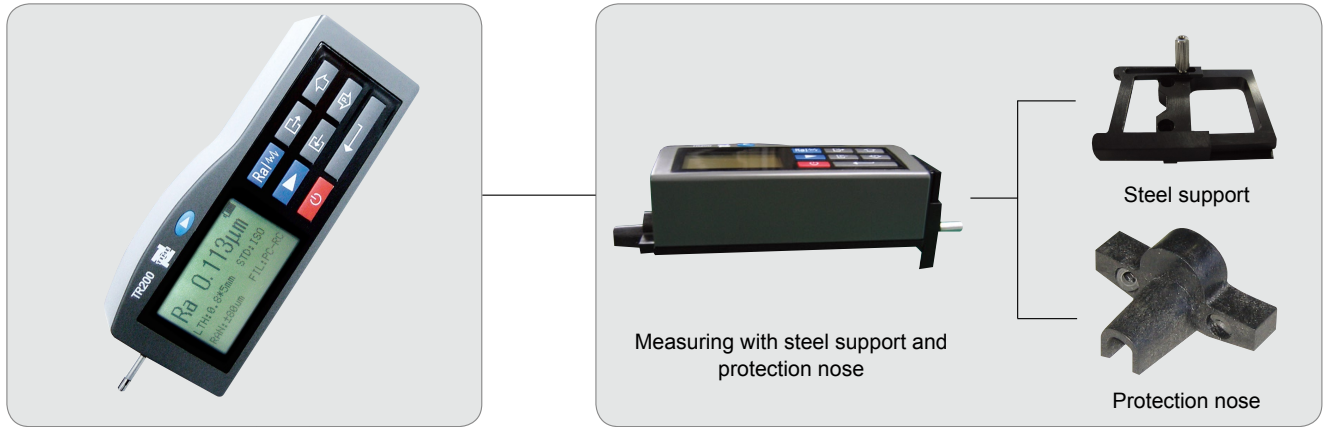
### Features

- Applicable in production site, laboratory and workshop in factory
- Easy operation menu and large LCD display with backlight
- Li-ion rechargeable battery
- Pickup position indicator
- Conform to ISO standard, compatible with DIN, ANSI and JIS standard
- Advanced software for TR200 and TR220 is available
- Lots of delicate optional accessories are supplied making user's measurement more efficient and much easier

### Technical Specification

Model	TR200	TR220
Roughness parameters	Ra, Rz, Ry, Rq, Rt, Rp, Rmax, Rv, R3z, RS, RSm, RSk, Rmr,	Ra, Rz, Ry, Rq, Rt, Rp, Rmax, Rv, R3z, RS, RSm, RSk, Rmr, Rpc, Rk, Rpk, Rvk, Mr1, Mr2
Assessed profiles	Roughness profile (R) Primary profile (P)	
Measuring system	Metric, imperial	
Display resolution	0.001 µ m	
Data output	RS232	
Pickup measuring range	±20µ m, ±40µ m, ±80µ m	
Cutoff length (L)	0.25mm / 0.8mm / 2.5mm/Auto	
Evaluation length	1~5L (selectable)	
Tracing length	(1~5)L+2L(selectable)	
Digital filter	RC, PC-RC, Gauss, D-P	
Max. tracing length	17.5mm/0.71inch	
Min. tracing length	1.3mm/0.051inch	
Pick-up	Standard pickup TS100, inductive, Diamond stylus radius 5µm, angle of stylus 90°	
Accuracy	≤±10%	
Repeability	<6%	
Power	Li-ion battery rechargeable	
Dimensions(mm)	141×56 ×48	
Weight(g)	480	440

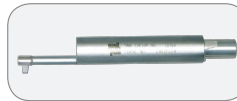
## System Diagram



## Pickups Optionals



TS100 standard pickup  
With skid for roughness test on plane surface, shaft and inner surface of holes with min. diameter of 5mm, max. depth of 22mm



TS110 pickup for curved surface  
Used for roughness testing of curved surface with min curvature radius 3mm, working with measuring platform TA610/620



TS120 pickup for small holes  
Used for roughness testing of small holes with min. 2mm diameter of inner surface, max. depth 9mm



TS140 right-angled pickup  
Comprising right-angled pickup and right-angled transmit rod, used for roughness testing of groove and crack with min. width 7.5mm~20mm, and of steps with max. height 2.5mm, working with TA610/620

## TS130/131 pickup for deep grooves



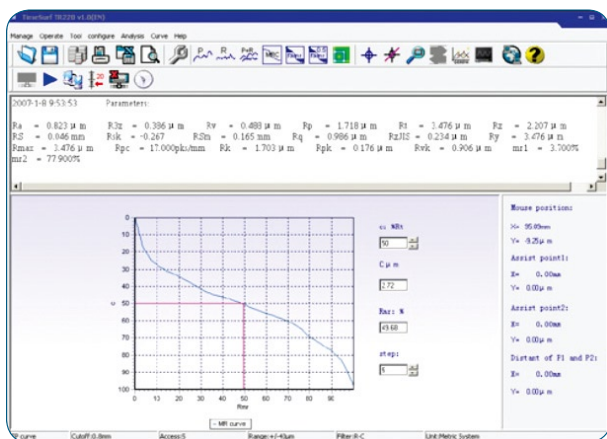
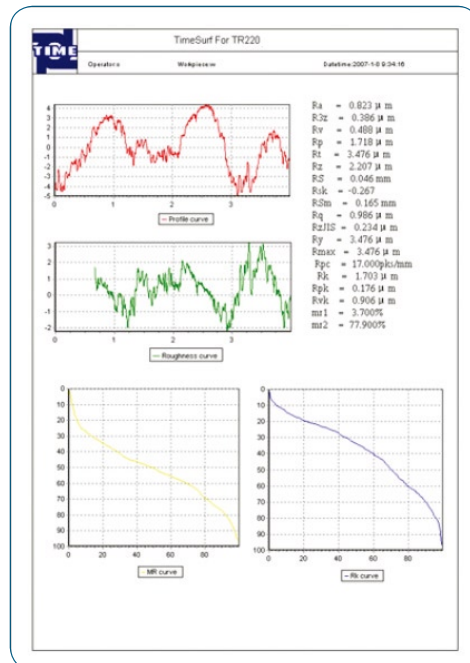
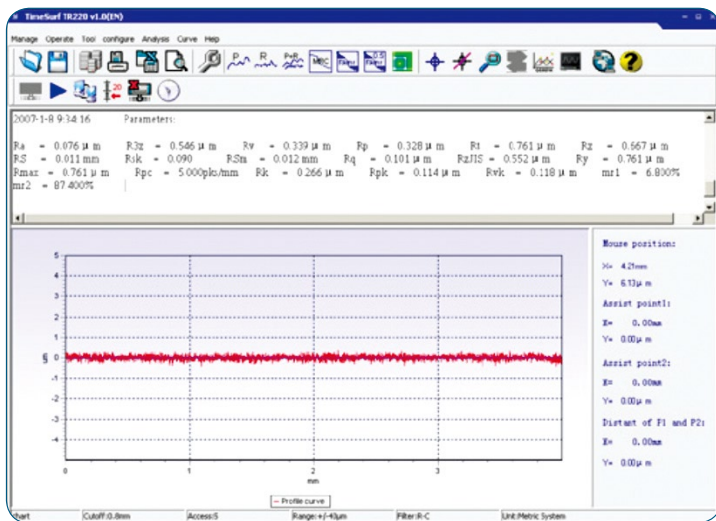
TS130: Used for roughness testing of deep groove with min. width 2mm, max. depth 3mm or of step with max. height 3mm



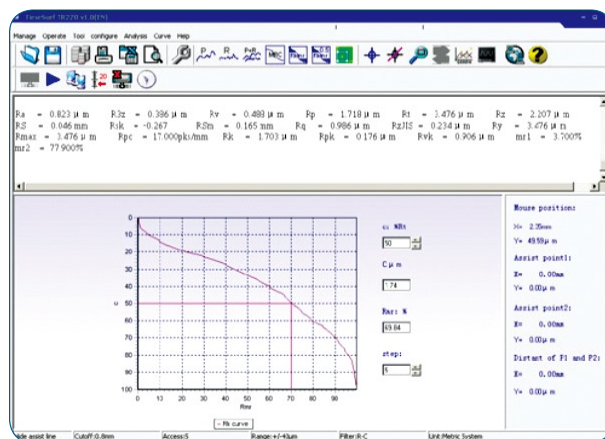
TS131: Used for roughness testing of deep groove with min. width 3mm, max. depth 10mm or of step with max. height 10mm, working with measuring platform TA610/620

## TIMESurf for TR200/TR220

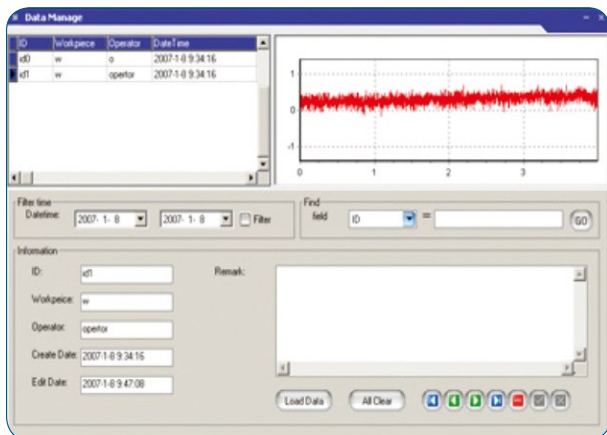
TIMESurf for TR200 and TR220 Software works with TIME surface roughness tester TR200 and TR220 for managing, analyzing, printing and searching measured data and graphs



MR Curve



RK Curve



Database management

Sample interval time:  min

Operator:

Workpiece:

Sample times:  times

State:

Online measurement