

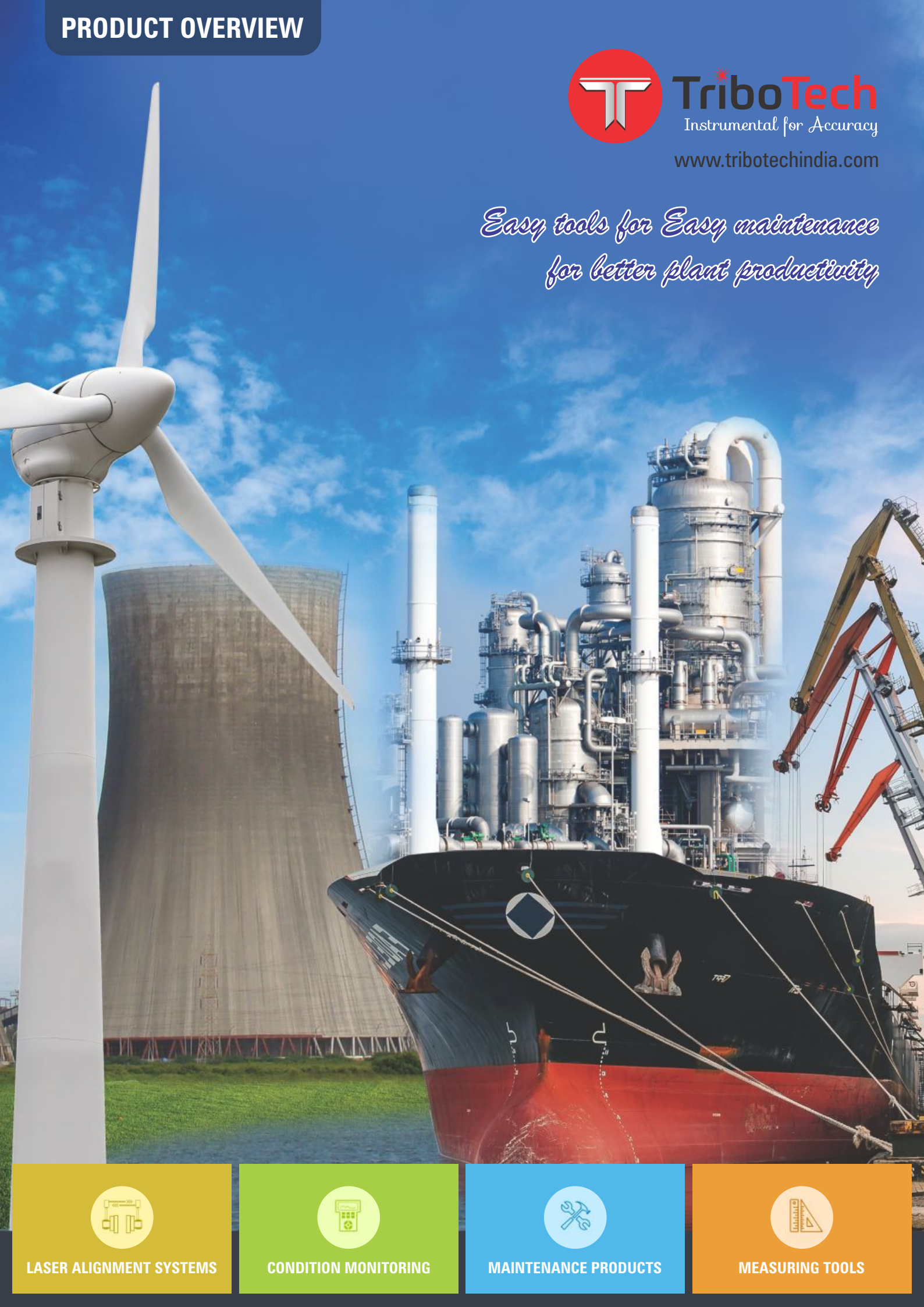


**TriboTech**

Instrumental for Accuracy

[www.tribotechindia.com](http://www.tribotechindia.com)

*Easy tools for Easy maintenance  
for better plant productivity*



**LASER ALIGNMENT SYSTEMS**



**CONDITION MONITORING**



**MAINTENANCE PRODUCTS**



**MEASURING TOOLS**



Training Center



Our Team



Service Center

## ABOUT US

Tribotech established in 1995 is Instrumental for Accuracy in Maintenance and Inspection field for today's demanding industry. We have range of products to meet maintenance personnel demands for products for maintaining trouble free operation.

### LASER ALIGNMENT SYSTEM :

We represent 'EASY-LASER', Sweden for Laser based Shaft, Belt and Geometrical Alignment System. Stainless Steel SS306 Pre-cut shims form a part of our product which plays a crucial role as a good alignment practice for precise alignment.

### CONDITION MONITORING :

We represent 'VMI', Sweden and 'TIME' brands with a complete range of Instruments for vibration monitoring to analysis from Basic vibration meters to FFT analyser and online condition monitoring systems and "LUNETTA" Condition monitoring POD. HILGER & KERN German Leak detect and French LEAK SHOOTER for finding expensive compressed air leakages for machinery and plants. 'ETI' UK make infrared or surface thermometers to cater to all industrial application.

### MAINTENANCE PRODUCTS :

We represent 'SIMATEC' Swiss make Induction heater for Mounting and 'POSILOCK' Mechanical and Hydraulic Pullers for Dismantling of bearing, gears, sleeves, etc. IDtools iductor for flameless heating of nuts, bolts, bushes, etc. 'SIMALUBE' Automatic Lubricators for 24x7 lubrication for intricate lubricating points. and Non-Sparking hand tools for safe working in hazard areas.

### MEASURING TOOLS :

We represent: 'HILGER & KERN' Belt tensioner, 'COMPACT' Speed measuring instruments, Stethoscope, Stroboscope and 'TIME' non-destructive instruments like hardness tester, coating thickness gauge, roughness tester, etc.

For Automobile sector we deal in **GARAGE EQUIPMENT** for commercial vehicle industry. 'JOSAM' Sweden leaders in Wheel alignment, 'SIRIO' Italian Tyre Changer and Balancers, SAFETY SEAL Easy-Balance Powders, 'SEFAC/ BUSLIFT' of France for Mobile column lifts for truck, buses, trains, trams, etc.

Our groups association with Industrial Maintenance field and Commercial Automobile is for more than two decades have given us immense knowledge in technical and marketing such high tech products and we have earned a reputation among our customers spread across the country for good Sales and after Sales Services. We have customers scattered across the country in all streams like cement plants, steel industries, power generation plant, petrochemical industry, defence, ferrous and non-ferrous plants, automobile industry, tyre companies, etc.

### OUR SERVICE ARM

We at TRIBOTECH have enriched in past 24years to cater to the growing demand for quality and reliable technical support in repair and services we have launched our services company TECHSERVICES around 8years back. TECH SERVICES is now full-fledged authorized center for repair and calibration facilities catering to India and neighboring countries customer. We provide on-site field services for laser alignment, vibration analysis, commercial vehicle wheel alignment and thermography.



T	Tougher Products
R	Reliable
I	Innovative
B	Better Service
O	Optimum Utilisation
T	Technologically Advance
E	Edge Over Competition
C	Customer Satisfaction
H	Higher Efficiency

## WHY US

- Best In Class Products and Brands
- We represent world renowned companies
- On time Sale Delivery & Reliable after sales service
- Support and Repairs in India
- We have a Good team work

## WE REPRESENT

**EASY-LASER®**



**LEAKSHOOTER**



**PRISMATIBRO**



**simatec®**  
smart technologies



**LUNETTA**

**compact**  
INSTRUMENTS



**POSI LOCK**  
PULLER, INC.

**idtools®**





# LASER ALIGNMENT

**EASY-LASER®**

## SHAFT ALIGNMENT

GENERATION **XT**

*THE AGE OF MEASUREMENT INDEPENDENCE IS HERE!*



ISO  
9001  
CERTIFIED

3  
YEAR  
WARRANTY

CE



Thanks to ground-breaking cross-platform technology, XT lets you display data on a multitude of different handheld devices, giving you the freedom to work with the gear that suits you and your company the best. To make this new generation as straight forward as possible we have included all XT measurement programs in a user-friendly application you can download for free. No locks In, No License hassle Rugged design and long operating times, Unique Documentation possibilities. Free downloading of App



**All XT programs in  
one free app**



**No lock-ins**



**Maximum flexibility  
and ease of use!**



**Long operating times**

## GENERATION XT FEATURES

XT770

XT660 / XT550

XT440

\*Accessory required. # Also with XT550.



SOFT FOOT



HORIZONTAL



VERTICAL



VALUES  
(DIGITAL DIALS)



BELT  
ALIGNMENT \*



VIBRATION \*



TWIST



3 MACHINE  
TRAIN



MACHINE  
TRAIN \*



EASYTREND

Measurement functions:



WIDE LIVE  
ADJUSTMENT



9-12-3



EASYTURN



MULTIPOINT



CONTINUOUS  
SWEEP



360° LIVE  
ADJUSTMENT

GET IT ON  
**Google Play**

RUN IT ON  
**EASY-LASER XT11**

Download on the  
**App Store**

## XT770 - WIRELESS AND DOT LASER - ADVANCE SYSTEM



20 m / 66'

IP66

IP67



Easy-Laser XT70 is the most powerful Dot laser Generation XT alignment system with Dual Axis detector. It is a complete Shaft alignment system for horizontal and vertically flange mounted machines. It features Continuous Sweep, Multi point 360 Deg., Live Adjustment any angle. Machine train, foundation twist, Soft-foot, Bearing clearance and much more. Easy Trend program allows tracking of machine movement overtime.



## XT660 - WIRELESS AND DOT LASER - FOR LARGER MACHINES



20 m / 66'

IP66

IP67

Easy-Laser XT660 is a powerful Dot Laser XT alignment system with Single Axis Detector. XT660- measures larger machines and longer spans for horizontal and vertically flange mounted machines. It features Continuous Sweep, Multi point, simple Machine train, foundation twist, Soft-foot, and much more

## XT550 - WIRELESS AND DOT LASER - INTRINSICALLY SAFE



20 m / 66'

IP66

IP67



Easy-Laser XT550 Ex-approved system is developed for hazardous areas and is easily operated through our XT Alignment app. It is an advanced measurement system for alignment of horizontal and vertical/flange mounted rotating machinery. It comes with Easy-Laser's dot laser technology, allowing you to measure large machinery and long spans. The measuring units are approved in accordance with the latest ATEX directive, and are rated both IP66 and IP67 water and dust proof. System XT550 comes with ATEX approved ECOM Tab-Ex® however can be used with own Display Unit which is however not Ex/ATEX approved.



## XT440 - WIRELESS AND LINE LASER - SHAFT ALIGNMENT SYSTEM



10 m / 33'

IP66

IP67

Easy-Laser XT440 is the most versatile system with maximum flexibility in the market. It can do most application for normal Shaft alignment system required in today's demanding maintenance practices. The system enables you to measure Softfoot, Horizontal and Vertical machines. Additional features like Belt alignment, vibration measurement may require optional accessories



# BELT ALIGNMENT



For almost all belt drives: V-belt, timing belt, flat belt and chain drives.



## XT190 BTA - DIGITAL

Digitally displays the parallel and angular misalignment “live”. Use it as an add-on to the XT770/XT660/XT440 /E720/E710/E540 systems, or as a separate tool thanks to the built-in display. Or download the free XT Alignment app and use your iOS or Android phone/ tablet as display device! Align to specified tolerances, then document the result as PDF.

## XT90 BTA - VISUAL

Laser tool with targets for accurate visual belt alignment.

# VIBRATION MEASUREMENT

## XT280 VIB

Easy-to-use vibration analyzer that quickly diagnoses vibration level, unbalance, misalignment and looseness.

The direct readout of 1X, 2X, 3X RPM, total level as well as bearing condition provide necessary information during installation and alignment.

The XT280 connects to the XT alignment app, making it possible to document the result as PDF, with photo and comments for each measurement point.

7.5	ISO mm/s
23 BDU	0.4 g



# THERMAL CAMERA

## XT11 + THERMAL CAMERA

The Easy-Laser® XT11 Display unit has the option to add a thermal imaging camera (IR) along with the standard 13 MP digital camera. Shoot a thermal image before and after alignment and include with the documentation.





## E-SERIES FEATURES

E720  
E980  
E975  
E970  
E960  
E950  
E940  
E930  
E920  
E915\*  
E910\*

E710

E540

E420



SOFT FOOT



HORIZONTAL



VERTICAL



V 0.00  
H 0.00  
VALUES  
(DIGITAL DIALS)



MACHINE  
TRAIN\*\*



BELT  
ALIGNMENT\*



STRAIGHTNESS



FLATNESS



TWIST



CARDAN/  
OFFSET  
MOUNTED\*



PARALLELISM\*



OFFSET AND  
ANGLE



FLANGE  
FLATNESS



SECTIONAL FLANGE  
FLATNESS



FLANGE  
PARALLELISM\*



SQUARENESS



ROUNDNESS/  
OVALITY\*



STRAIGHTNESS  
2-POINT



STRAIGHTNESS  
3-POINT\*



STRAIGHTNESS  
4-POINT\*



STRAIGHTNESS  
MULTIPOINT\*

# Only includes Flange programs and Values. \*\* Limited to 3 machines for E540. \*Accessory required.

## E720 OR E710 - HIGH END SHAFT / GEOMETRICAL SYSTEM

2 AXIS  
PSD

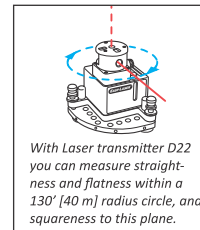
20 m / 66'

BARCODE  
SYSTEM

### Easy-Laser E710 handles all stages of machine set and alignment :

- Measure the base twist
- Correct Soft foot
- Measure misalignment
- Align the machine
- Measure Thermal Growth
- Documents the results

Optionally add Easy-Laser Laser Transmitter D22 the system becomes Easy-Laser E720 System besides the above features the system is now ready to measure Straightness of pipes and Shafts, Flatness of base and surfaces and many more a geometrical application. Easy-laser E720 system can perform any kind of machine set-up, quality check and alignment



With Laser transmitter D22 you can measure straightness and flatness within a 130' (40 m) radius circle, and squareness to this plane.



## E540 SHAFT ALIGNMENT

1 AXIS  
PSD

10 m / 33'

BARCODE  
SYSTEM

Easy-Laser® E540 is a very powerful shaft alignment system, with the ideal balance between performance and price. The measuring units are incredibly compact featuring wireless technology, an integrated rechargeable battery and TruePSD detectors. This means that they are easy to install on most types of machines, even where there is limited space. The wireless technology gives you full freedom of movement around the machine that is to be aligned. Start with the measuring units positioned anywhere through 360° around the shaft, then take any three readings down to 20° in-between. Then adjust the machine with the live-values in both horizontal and vertical directions. Simple and efficient! Programs included: Horizontal, Vertical, 3-Machine train, Values, Belt transmission alignment.



## EASY-LASER® E420 SHAFT

1 AXIS  
PSD

3 m / 10'

BARCODE  
SYSTEM

The Easy-Laser® E420 sets a new standard in entry level laser systems for shaft alignment. Wireless measuring units, a large 5.7" colour display and an IP65-rated design that withstands harsh environments. These are the features you would normally only find in more expensive systems!

# GEOMETRICAL SYSTEMS

## E915 / E910 FLANGE FLATNESS



For flange flatness measurement. See the result as a true 3D image in the display unit directly after measuring. Evaluate the result easily with different calculation settings directly on site without having to stop to go to a PC with separate analysis programs. This makes production much more efficient. Two Flange systems are available:

**Easy-Laser® E915 with Spin Laser.**

**Easy-Laser® E910 with Swivel Laser.**



## E920 / E940 - GEOMETRIC MEASUREMENT AND MACHINE TOOL



Easy-Laser E920 is versatile system can be used to carry all common geometric measurements like straightness, flatness, squared, plumb and level. The system is provided with Laser transmitter D22 having range of measurement upto 40m and detector resolution down too 0.001mm. In case of higher accuracy for complete Machine tool solution we recommend Easy-Laser E940 it has Hyper PSD precision detector with resolution down to 0.0001mm resolution. You can measure all the application of Easy-Laser E920 additionally Spindle direction and alignment of machine centres can be measured.



## E290 DIGITAL LEVEL

Digital extremely useful and handy tools for setting up and aligning most types of machine for example levelling machine tables, rolls, bases, etc. E290 also offers the possibility of documentation by connecting to EasyLaser Alignment system or simply use iPhone, iPod or iPad as display with free app for Precision level for adjustment of machine or documentation of measurement.



## E950 BORE ALIGNMENT



- E950 makes measuring and aligning bearings and bearing journals easier thanks to wireless detector and versatile brackets.
- Measures both full bores and half bores.
- Multipoint measurement.
- Bore Ovality measurement.
- Calculate waviness (short and long) and best-fit



### Available configurations:

**E950-A and E950-C** for Diesel engines, Compressors, Gearboxes etc.

**E950-B and E950-D** for Propeller shaft drive lines with sterntube.

## E960 TURBINE ALIGNMENT



Easy-Laser® E960 Turbine alignment systems make the measurement and adjustment work of diaphragms and bearings easier thanks to the wireless detector unit and measurement programs that guide you through the measurement process.

- Measures both full bores and half bores.
- Multipoint measurement
- Bore Ovality measurement
- Calculate waviness (short and long) and best-fit



### Available configurations:

**E960-A:** Suitable for gas turbines and smaller steam turbines.

**E960-B:** Suitable for large turbines.

## E970 AND E975 ROLL PARALLELISM

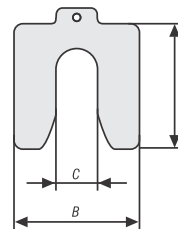


EasyLaser E975 is designed mainly for Roll alignment when just one or two rolls are to be replaced or adjusted at the same time. The E975 use a new revolutionary detector and digital precision level and quick machine up. Work with E975 can be done in even short stoppages. EasyLaser E970 is versatile system when rolls to be aligned are at long distances. Same system can also be used fro flatness on wire sections, flatness of bases and straightness of rolls.



## PRE-CUT MACHINERY SHIMS

Pre-punched, high quality stainless steel shims made of SS304 or other material of choice, makes alignment of your machines safer and easier. Shims are etched with size and thickness and quickly identifiable, burr free shims which are safe to handle. Small handy shim cases available for easy transport. Custom size shims for plumber blocks, Double /Multiple, U-cut, circular washer, diaphragms, can also be made as per drawing. Choose one of our shim cases or from shim from all sizes available as loose packs of 25Nos.



# EZY

## SOFTSHOE® ELASTOMER SHIMS



SoftShoe® elastomer shims solve angular soft foot alignment problems on motors, pumps, generators, turbines, and other plant machinery in minutes. SoftShoe® cures angular soft foot and extends bearing and motor life. It is an inexpensive alternative when compared to more time consuming and expensive options such as milling the base or foot, hand cutting graduated shims, replacing base, or rebuilding base with poured epoxy. Each SoftShoe® elastomer shim's thickness has a 12 percent flat compression under standard bolt torque, yet will absorb the angularity of nearly half its thickness. Product also available in cut to length sheets with 38.5" width.







# CONDITION MONITORING



## PORTABLE VIBRATION INSTRUMENT

### VIBER A+



The VIBER-A+™, portable Vibrometer consists of soft carrying bag, a vibration transducer with magnet support. It measures Bearing condition and vibration in velocity (mm/s RMS) in two different versions, with frequency ranges 2 Hz or 10 Hz, 1000 Hz or 16 000 Hz. Tool for every engineers toolbox.

### VIBER X1



The VIBER X1™ portable Vibrometer consist of carrying bag, a vibration transducer with magnet support extension tip, charger and rechargeable batteries. The range can be set by adjustable filters from 2 to max frequency 16 000 Hz. It measures Bearing condition and vibration in velocity (mm/s RMS).

### VIBER X2



The VIBER X2™ is a portable Vibrometer. A complete set consist of an instrument, carrying bag, a vibration transducer with magnet support extension tip, charger and rechargeable batteries. It is a Digital instrument with capacity to measure velocity, acceleration and displacement, it measures also Bearing condition. It's also possible to make analyses if you use the instruments feature to show the top 5 frequencies.

### VIBER X2 PRO



VIBER X2™Pro is same instrument as VIBER X2 but with a software and possibilities to save and upload the measurement data to a computer for trending and further analyse.

### VIBER X3

**VIBER X3™** is a more advanced instrument compared with **VIBER X2™**, the instrument has the same features but also temperature measurement and ability to listen to Bearing sound. It is delivered with headphones and software in a carrying case.



### VIBRATION PEN



**TIME®7120** for velocity testing | **TIME®7126** for testing of acceleration, velocity and displacement

- Prompt testing of vibration on the workshop machines and fast flaw detection of motor, electric fan, pump, compressor and machine tools to guard against mechanical malfunction
- Lightweight Compact size with only 1 button
- Low energy consumption, keep working for more than 4.5 hours continuously.
- Auto power off



## VIBRATION ANALYSER

### X-VIBER - ROUTE ANALYZER INSTRUMENT



X-Viber is a more advanced instrument used for condition monitoring with more advanced software for analysing measurement and also one plan balancing capability. A complete delivery is with sensors and software, there are features that can be added to the standard instrument.

Instrument with same functions as standard, but additional features like data logging, Amplitude and Phase, Balancing software and more advanced software, SpectraPro. Amplitude and Phase makes it possible to make an ODS (animation) analyse, using our VibShape.

## VIBER X5 MK III - FFT VIBRATION ANALYZER & BALANCER

VIBER X5 MK III™ is an advanced vibration analyzer, together with SpectraPro® PC software it provides a complete package for predictive condition maintenance. VIBER X5 MK III™ is capable of measuring, processing, displaying and storing a wide range of measurement parameters. You can collect various types of field data; examples are vibration information, bearing analyze, temperature, speed and other process variables that enables you to expand its functionality by adding new measurements to improve your analysis capabilities. You may also use the VIBER X5 MK III™ for 1 or 2 plane balancing. VIBER X5 MK III™ perfectly fits with the SpectraPro® multipurpose software and it is also compatible with our other analyze instruments.

### Features:

- FAST and RUGGED
- Embedded Thermal Camera.
- VIBER X5 MK III™ uses a new generation of floating point DSP processor from Texas Instruments (C6700 series), which ensures a very short data processing time.
- Made for rough use in hard environments. IP65 casing and operating temperature of -20 to +70 °C



## X-BALANCER - DEDICATED BALANCER

Wireless X-BALANCER™, safe to use, personal don't need to be close to noisy and hazardous environments, they can be up to 20 meters away from the machine being balanced. Easy to use, all necessary knowledge is available in the hand unit, can be used for all rotating machines like Pumps, Fans, Mills, Mowers, Stirrers and Blowers.

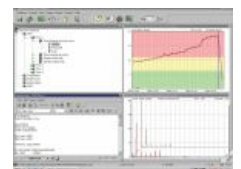
Balancing can be performed in accordance with ISO Standards 1940, easy to afford, best price/performance ratio, balancing in 1 or 2 planes, balancing can be stored in the Machine Library. Ability to measure the spectra before and after balancing to present spectra graph into the balancing report and also perform Coast up and Coast down. Balancing results can easily be reported.



## VIBRATION SOFTWARE

### SPECTRA-PRO

SpectraPro is an analysis program for several of our instruments. Easy Database design with templates and machine pictures. Calculation of machine fault frequencies including a bearing data base, belt drives, gear boxes and electrical motors. SpectraPro has band analysis that helps analysing the trend of a singular frequency or fault. SpectraPro has several automatic reports like, Spectrum, Trend and Transfer reports.



### VIB-SHAPE

With the animation program Vibshape you will "understand" how a machine vibrates and what measures should be taken.



### XTOOLS

X Tools, software to be used with VIBER X5 MKIII™ helps you to import all measurements made by VIBER X5 MKIII to PC, look at each individual measurement and make an analyse. You can also make a report from one or more measurements. Typical is Special Spectra, Coast up/down, Orbit, Sync and Cross Spectra, Bump test, Data logging, MCSA, Balancing and thermal measurements.

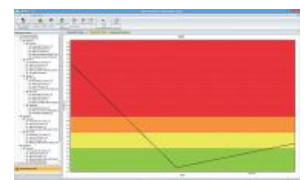


### XTRENDS

XTRENDS software works with the X-Viber instrument. For creating a database in a plant having unlimited number of machines, measurement points and directions.

### TREND VIEW

TREND VIEW works with the VIBER-X3 instrument. For creating a database in a plant having unlimited number of machines, measurement points and directions.





# VIBRATION ONLINE MONITORING

## VIBER M2



It is a 1 or 2 channel machine guard. The M2 can give an alarm or stop the machine if vibration indicates failure. The M2 is designed for standalone guard, but can send information into a programmable controller or to other monitoring system.

## VIBER M80



M80 system - the new platform for Online monitoring. The platform allows you to take measurements even when your machines' condition varies, this make the monitoring much more reliable compared to simpler multiplexing systems.

## VIBER MP



The system is an analogue system with machine protection capability. Monitor vibration, Bearing condition and Temperature using only one sensor! Economic efficient as always with VMI products!

- Easy to set up
- Easy to use
- Easy to expand
- Easy to understand
- Easy to afford

# LEAK FINDER

## LEAK DETECT

For Leak detection for compressed air networks as well as pneumatic systems in plants and machines. The device detects leaks, which emerge at cross section from 0.1mm. Particularly effective in noisy environment where the leaks are not audible with the ear.



## LEAK SHOOTER



### ULTRASONIC LEAK SHOOTER V2

Leakshooter is the worlds first Leak finder with Dual possibility of Ultrasonic Detection with a visible image enables you for the first time to see on a large LCD screen the precise location of air, vacum leaks, partial discharges, etc. Thanks to a dynamic target whilst possibility of listening. The possibility to shoot pictures of the precise location of the problems, and to download them into PC, makes the job of the repair team much easier and enables you to save time.

### ULTRASONIC LEAK SHOOTER & STRAPSHOOTER V3

Leakshooter V3 ultrasonic leak detector, for air, gas vacuum, steam leaks. It is the first steam trap automatic controller Strapshooter, With the contact probe which works like a stethoscope the Leakshooter with its dedicated software STRAPSHOOTER will distinguish between the opened, closed or cycling state of the steam trap.



# HANDHELD THERMOMETERS



Electronic Temperature Instruments Ltd, is an award-winning digital thermometer manufacturer, producing digital and infrared thermometers for food service and industry together with dataloggers, moisture meters, humidity and pH meters. With demand for WiFi and Bluetooth temperature products, ETI has developed a range of products to meet this market.

In addition to manufacturing temperature measuring equipment, ETI has an in-house UKAS accredited calibration laboratory for both temperature and humidity together as well as an in-house service department. Some of the common fast moving thermometers mention below. For any temperature application ETI range has solution to provide.

THERMAPEN	RAYTEMP 3	RAYTEMP 6	RAYTEMP 8	RAYTEMP 38
for Surface -50 to +300°C	-60 to +500°C	-60 to +500°C	-60 to +500°C	-60 to +1000°C
				

# INDUSTRIAL STETHOSCOPE



## ELECTRONIC STETHOSCOPE

The **STE4 electronic stethoscope** is designed to help locate the source of excess bearing and machine noise easily at low cost. It is an ideal easy to use listening device for mechanical generated noise in all types of applications.

The 3.5mm jack socket tape output on this electronic stethoscope can also be fed into an audio tape recorder to store the data for either further analysis or as a reference for future comparison.






# CONDITION MONITORING POD



Luneta, LLC is reimagining machine inspection technology by listening to the needs of maintenance personnel and developing innovative products. Luneta provides a small window into machines through its products for making proactive maintenance decisions.

**THE HUB** has four lateral ports allows you to install compatible attachments including oil level sight glasses, BS&W Bowls, sample valves, drain valves, filter cart, etc. all at the same time. And with a high flow sample port, the Hub can tackle any sampling needs you have.

**THE COLUMN** is a crystal clear oil level sight glass for visual inspection and level in oil in pumps, gear boxes, storage tanks and reservoirs. It features a one-piece design with 1-inch NPT threads at each end and includes a 3 -micron breather. The Column can also be plumbed to vent back into the equipment's headspace .

HUB	COLUMN	BOWL	SIGHT GLASS	POD
				

**THE ULTIMATE 2-in-1** is BOWL. It serves s as both a sight glass and BS&W bowl. The distinctive contour design allows for immediate visual inspection of the oil, along with early detection of potential contamination like problems like water and sediment. Providing a visual indication of wear debris while the machine is running. The Bowl's rare earth magnetic drain plug protects machinery by attracting and drawing wear particles to the bottom, proactively preventing machine failure and enabling a thorough drain of contaminants.

**THE SIGHT GLASS** has all the clarity and durability you need, with none of the leaks, cracks or squinting you may be used to with those old-style oil sight glasses. You'll never have to use fragile, dark, hard-to-read oil sight glasses again!

**THE POD** This multi-parameter inspection pod lets you quickly observe oil level, color and clarity, oil aeration and foaming, corrosion, varnish, wear debris and much more. You will quickly identify root causes and symptoms of failure that would have previously gone undetected.





# MAINTENANCE PRODUCTS

## MOUNTING TOOLS

**simatec**  
smart technologies

### FITTING TOOLS

**simatool**  
smart tools

The Fitting Tool FT 33 is for careful mounting of roller bearings and radial shaft seals. Universal use for bearings with a bore diameter from 10 to 50 mm. Easily carried in a handy case, including a recoilless hammer.

- 3 impact sleeves and 33 impact rings
- No mechanical damage of the bearing
- Also suitable for the mounting of sleeves, sealing rings, pulleys and much more



### INDUCTION HEATERS

**simatherm**  
smart mounting

Simatherm induction heaters- the perfect solution for a clean and economical heating of bearings and components. Simatherm induction heaters the perfect solution for clean and economical heating of bearings, gears and components from 10 to 800kgs, bearing diameter from 10 to 850mm. The Simatherm induction heaters are heating ring-shaped workpieces, such as bearings, in a very short time. By making shaped parts can easily be mounted. Other models available on request.



## DISMOUNTING TOOLS

**Posi Lock**  
PULLER, INC.

### MANUAL PULLERS

The Posi Lock® line of quality manual gear and bearing pullers sets the standard for quickness, ease and convenience. The T-handle and Cage® control the jaws at all times. Opening, Closing, Locking and Aligning of the jaws are all done automatically by simply turning the T-handle. These pullers have been designed for effective removal of stubborn gears, bearings, pulleys, and other press fit items from any machine in diverse industries ranging from 1- to 40-ton capacity.

### HYDRAULIC PULLERS

Posilock Hydraulic Pullers are available in 2 or 3 jaw models and range from 5 - 200 tonnes capacity. Known for safety, high quality, durability and ease of use, Posilock pullers are designed to help you extend bearing life in your applications through proper installation, removal and service.



### INTERNAL PULLERS AND SEAL PULLERS

**simatool**  
smart tools

**Internal Puller BP61** ideal for the removal of many tough internal pulling jobs such as crankshaft pilot bearings, bearing cups, needle bearings, bushings, seals and grease retainers.

**Seal Pullers SP50** is ideal tool for dismantling rotary radial shaft seals and seals of all sizes.



The iDuctor is the ultimate precision heating tool. This electronic tool applies heat by means of induction technology, allowing a wide range of ferrous metals to be heated from the inside out. The crucial characteristic of induction heating is that the outermost components are heated, contrasting with the use of a gas burner which heats everything simultaneously. One of the greatest features of the iDuctor is its usability and adaptability. The spirals through which the induction heating is conducted can be switched of and changed by other spirals. Available in basic and professional models.



## AUTOMATIC LUBRICATORS

**simalube®**  
smart lubrication

### SIMALUBE



II 1G Ex ia IIC T6 Ga  
II 1D Ex ia IIIC T80 °C Da  
I M1 Ex ia I Ma

SIMALUBE, the compact automatic single point lubricator is economical, universally adaptable, for a clean and reliable application. Simalube lubricators guarantees a consistent supply of lubricant in the pre-adjusted proportioning within seconds it can be fixed to the lubricating point. The lubricating amount can be sleeplessly adjusted by means of an Allen key. Simalube can be filled as well as refilled by using a standard barrel pump that is typically used to fill grease guns. The reliable simalube lubricator operates 24 Hours, 7 days a week and is continuously adjustable from one to twelve months. It is driven by the unique worldwide patented gas producing dry cell.



### IMPULSE

Simalube IMPULSE is the perfect complement to the tried-and-tested simalube lubricator – wherever high pressure is required. Simply affix the simalube IMPULSE to the lubrication point, then screw on and activate the desired simalube lubricator. That is all it takes to overcome counterpressures of up to 145 psi. No further adjustments need to be made to the device. The LED display provides information at all times on the condition and functionality of the simalube IMPULSE.

## NON SPARKING TOOLS



Non-Sparking tools are used where there is a serious risk of fire or explosion or whether there is a particular demand for specially designed Non-sparking, Non-magnetic or corrosion resistant tools. Non-sparking tools are an ideal choice for use in hazardous environments of the offshore industry such as natural-gas installations, oil tankers, gas works, oil drilling platforms, oil-refineries, petrochemical plants and shipyards. They are also ideal for other fields that are also characterized by the need for safety tools, such as aircraft factories, dye and varnish factories, etc.

Non-Sparking tools are made of Beryllium Copper or Aluminium Bronze. They are available as assorted safety tools, Hex and Square Wrenches, Shovels and Digging Tools, Spanners, EOD Tools, Brushes, Pilers Saws, Sockets and Accessories, Wedges, Titanium, Chisels, Scrapers and Knives, Spanners, Wrenches, Crowbars and Caulking Tools, Hammers, Screwdrivers, Valve and Hook, Tool Boxes.





# MEASURING TOOLS

## BELT TENSIONER



### CONTACTLESS - TRUMMETER

A belt will only reach its maximum service life if it has the optimum settings. The correct belt tension can also help roller bearings and pulleys to last longer. With the TRUMMETER, measuring belt tension couldn't be easier: simply switch on the device, shine it onto the belt and make the belt vibrate.

Your measurement results will appear on the display straight away, in either hertz (frequency) or newtons (tensile force). This allows you to log your results clearly for commissioning and monitoring purposes (in accordance with DIN EN ISO 9001 et seq.



## SPEED MEASUREMENT



### ADVENT TACHOMETERS



**Advent A2103 Series** Tachometer features 5 Digit LCD inverting screen available in optical/contact non-contact /laser etc available with rinverting 5 Digit LCD for measurement of Speed in revolutions, metres, feet, yards per minute or per second. Intrinsically Safe model available.

### CONCORDE TACHOMETERS



**Concorde CT6 Series** CR Optical-Laser Chronometer is designed to measure Reciprocal Motion, using time intervals between 2 fixed reflective markers, the time range of the CT6 Optical-Laser Chronometer is 0.0001 seconds to 9.9999 seconds.

### DIGITAL STROBSCOPE



The Digital Stroboscope can be hand-operated to observe fast repeated motions as well as to determine RPM or rate of machinery components. The turning or oscillating machine part can be visualised as a stop motion picture. by adjusting the light flashes synchronously to the rate of the movement.

## NON DESTRUCTIVE TESTING



### PORTABLE HARDNESS TESTER



It is Leed type tester for checking any ferrous and non-ferrous material measurement of hardness in HL, HV, HB, HRC, and HS integrated with D or C or DL type impact device. Memory, backlit, battery power are standard features. Shore Hardness digital durometer for measuring hardness of hard rubber, plastic or elastomers

### ULTRASONIC THICKNESS GAUGE



It is easy to use and measure from 1.2mm – 225mm thickness on a 4 Digit display unit. It supports automatic non-linear compensation with computer software to correct the non-linear errors of the probe for the purpose of improving the accuracy. It is a Self-compensating device with 5 pre-set sound velocities for repeating application.

### COATING THICKNESS GAUGE



Coating thickness gauge uses magnetic induction method to measure non-magnetic coatings (e.g. paint, plastic, porcelain enamel, zinc, aluminium, chrome, copper, etc.) on ferrous substrates (e.g. iron, nickel etc.). This paint thickness meter is ideal for painted surface testing, car paint inspection, coated material testing, and quality control applications.

## DEFLECTION INDICATOR



**Prisma Deflection Indicator** to measure crankshaft deflection of engines available on both vessels and power plants. It is an engineer's professional tool for regular measurement of distance between crank webs, at different crank positions up to 0,001mm resolution.



## OVALITY KIT



**Prisma Ovality Kit** is an accessory to DI-5/DI-5C and it's mainly designed to measure the cylinder liners ovality and wear on diesel engines with cylinder diameters from 180-600 mm and stroke length up to 870 mm. The transducer associated with Prisma DI-5C enables the Prisma DI Ovality Kit to measure the differences down to 1/1000 mm. Prisma DI-5C with associated software makes it possible to transfer the measured data to a Windows PC and even export the data to an Excel sheet for further data process and comparison.

## Our Valuable Customers



For more information contact us today



**Tribotech**  
Instrumental for Accuracy

718, Swastik Chambers, 7th Floor, CST Road, Chembur (E), Mumbai - 400 071. (Maharashtra, India)  
+91-22-6799 7857 / +91-22-6799 7858 / +91-22-6799 7859  
SALES: info@tribotechindia.com | SERVICES: services@tribotechindia.com  
www.tribotechindia.com  
Follow us on : [f](#) [t](#) [in](#) [YouTube](#) - Tribotechindia