

AUTO PRODUCT OVERVIEW



TriboTech
Instrumental for Accuracy
www.tribotechindia.com

Save fuels, tyres & much more...

*With premium technology and
tools for commercial vehicles*



- More than 70% of the Medium & Heavy Commercial Vehicle's axles are misaligned
- Running cost of vehicle like the tyre & fuel costs are directly dependent on wheel alignment
- 1 mm toe difference reduces the tyre life by 7%
- Proper alignment increases the tyre mileage by 15% – 50%
- Proper alignment decreases the fuel consumption by 2% – 20%

CV-ALIGNER / CAM ALIGNER SYSTEM Camera Technology with Frame measurement



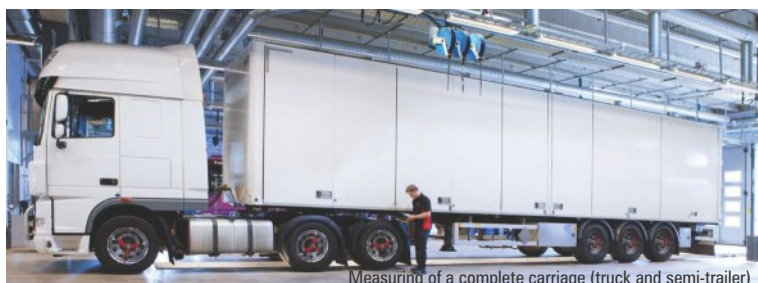
JOSAM CV Aligner/CAM Aligner is revolutionary new Compact Commercial Vehicle Wheel alignment system with PATENTED camera technology maintaining chassis centerline as a reference for trucks, buses, workshops, tyre service centers, to offer quick and accurate wheel angle measurements. Some of the Wheel angles which the system can measure are :

- Steering Axles: Toe, Steering box position, Camber, Caster, KPI, Toe Out On Turns and Max turn.
 - Rigid Axles: Camber, Out of square, Parallelism and Axle offset.
- Key Features:**
- The system has no moving part, it is compact and easy to use.
 - Same system can be used for mobile and workshop application.
 - Thanks to the scalability of the system it is also possible to obtain functions for:
 - Frame check ■ Quick diagnos ■ ACC (Adaptive Cruise Control) alignment.



I-TRACK

Laser Technology with Target on Floor



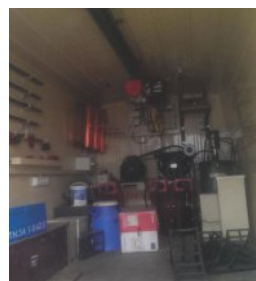
Measuring of a complete carriage (truck and semi-trailer)

- Wheel alignment system for speed and precision.
- No mountings on the chassis frame thus reduces the operators effort and measurement time by 60% from any other systems
- Suitable for all configuration of vehicle likely SUV, LCV, MCV, HCV etc.
- Gives the flexibility of correction on any axle
- Fastest wheel alignment measurement system in the market with Bluetooth connectivity
- Suitable for end of line production as well as after market applications where number of vehicles to be measured is more and time cycle is short.

MOBILE WHEEL ALIGNMENT CENTRE

For better ROI for alignment. Lot of companies have invested in Mobile Vans which can house the following:

- Wheel Alignment System
- Tyre Fitment and rotation
- Air Pressure Checker and correction Chassis Greasing.
- Possibility to have Tyre Changer, Wheel balancer on a bigger Service Van.





JOSAM®
Your safety - our mission

PLAY DETECTORS

- Accurate measuring system for wheels, axles and frames
Play in the bushes & joints to be corrected to get the best alignment results
- First-rate and versatile equipment is required to determine wear and tear on wheel suspension and steering systems
- Design of the plates permits circular movement which can detect any play in both axial and radial directions
- The system is simple to install and secured in place by three expansion shell bolts & can be installed either directly on the floor or over the service pit



AXLE CORRECTION TOOLS

- This is a simple & effective tool for correcting axle bends like camber and toe correction.
- Axles can be corrected by cold method and many a times heat through Induction heater is required to simplify the work.

INDUCTION HEATER

- Conventional methods like gas heating is not acceptable by many manufacturers as the physical properties of the metal to be heated will change besides most of the parts to be dismantled from the body. JOSAM Induction heater of various sizes depending upon the application can be used which is safe, localized and controlled heating in fraction of seconds.
- **JH400** for sheet metal straightening and loosening of nuts up to M24, pins, or clamping rings.
- **JH1000** for heavier machine parts like bolts and nuts, bushings, bearings and smaller chassis
- **JH1300** for straightening of chassis, and coarser parts and axles.



iDtools®

iDuctor of iDtools is a 100% Dutch product: it is developed and produced by the company Hedon in Delft. Hedon is a high-tech company that has been developing and producing electronics since 1984. The head office of iDtools International is located in Ulvenhout. This induction tool is used in the automotive, nautical, petrochemical, infrastructure and aerospace industries. Moreover, in 2013 and 2014 iDtools International has won the awards 'iF product design' and 'good industrial design' with the iDuctor.

IDUCTOR POWER+KIT

The Ultimate Tool for Flame-less Heating

- The iDuctor Power+W2300 is made of high-quality materials both in terms of design and product, according to the latest CE. The iDuctor Power+ W2300 is the only hand induction tool in the market with a capacity of 2300 Watts. It is an induction tool can be used in a great variety of workshops. By means of electronic induction heating, you can easily disassemble all rusted, glued or clamped ferrous parts.
- With the iDuctor only the outer construction parts are heated, so you the surrounding parts are not being damaged. Thanks to the temperature difference you can then easily detach the structural parts. Within tens of seconds you have already heated the part in such a way that disassembly is possible. There is basically no alternative to the iDuctor. When ferrous metal is oxidized, it is difficult or impossible to loosen it with conventional tools.





TOGON is a Hi-tech enterprise which specializes in developing and producing automotive maintenance and diagnostic equipment. TOGON specializes in variety of Heavy Duty Tyre Changers and Heavy-Duty Wheel balancer. TOGON is focused on Commercial Vehicle Industry for Universal Tyre Changer or Vertical Tyre Changer or Mobile Tyre Changer as well as Heavy Duty Wheel Balancer.

HEAVY DUTY TYRE CHANGERS



Model : TY008



Model:T568



Model:T588

Model No.		Max wheel Weight	Rim Daimeter	Max Tyre diameter	Max wheel Width
TY008	Electrohydraulic type Tyre Changer for Trucks Buses and Tractors. It can be mounted on a Van for Mobile Services	700Kg	13-26"	1300mm	600mm
T568	Semi Automatic Tyre Chnager with Self Centring Chuck. Eitherway rotation is possible can be used for Alu rim, tubeless tyres with accessories	500Kg	14-26"	1600mm	780mm
T588	Hydraulic Motor Vertical Truck Tyre Changer with automatic hydraulic mounting arm. Double pressing roller suitable for different sizes of tubeless tyres.	380Kg	19-26"	1400mm	470mm

HEAVY DUTY WHEEL BALANCER

Model: CB1200 Wheel Balancer is Easy of Use, stable and safe. Mounting and dismounting tyre with protection cover. It covers wide range of wheel balancing for motorcycles, cars, buses, trucks etc due to microprocessor integrated circuit. High precision balancing is possible by well balance big rim hole spindle. Pnuematic built in lift is standard

Rim Daimeter : 13-24" Max wheel
Width : 1200mm

Max wheel weight : 150Kg
Testing time : 8sec



EST - Corporation specialized in manufacturing of Nitrogen Tyre Inflation System and Automatic Air Inflator with brand name of G5. They produce and sell more then 800 Nitrogen Tyre Inflation system. Constant Innovation, enhance versatility and superior performance are hall mark of G5 brand. Various models for single tyre, all tyre simultaneous, with or without display, etc are available

PORTABLE NITROGEN GENERATOR

PN166 - High Pressure Nitrogen Generator (Indoor)

Main Feature:

- 145PSI/10bar High nitrogen pressure make the unit a fit for almost any size automotive service facility**
- 118L external nitrogen storage tank
- 10M standard hose with 2 quick couplers
- Suit for: Motorcycle, Car, Light Truck, Bus,Painting





BusLift® was founded in September 2004 to develop and market a new mobile column lift for heavy duty vehicles (buses & coaches, trucks) through the unprecedented know-how and expertise of its parent company SEFAC originated in the 70's, this new lift is the result of a computer-aided design validated by numerous tests in our laboratory and in the field. Our products are manufactured in the premises of the group thus enabling the use of a highly efficient production line and a proven quality control system. We can help for 4 column lift or a row of 36 synchronized rail jacks with 540 tons capacity. Our lifts are used for buses, coaches, trucks, trans, tramways, locomotives, etc.

The main advantage of the mobile systems compared with any other - fixed lifts or underground hydraulic lifts - is obviously the flexibility of the product: with a set of 4 columns, it is possible to have several workplaces in the workshop.

- A set of stands or trestles can maintain the vehicle in the upright position for the servicing.
- Easiness and rapidity to install,
- Better access under the vehicle,
- Much more light than in pits,
- Clear ground,
- Approach of transmission jacks and easy removal of mechanical assemblies...
- Safe & Reliable Lift for under carriage works Plug & Play Columns - Easy to use.
- Available in different capacities from 5.5 to 15 tons per column Mobile - Can be used anywhere in the shop.
- 20 - 30 % lighter in weight than any other make columns +/- 25 mm synchronisation allows for easy control.

Easy



Easy+



Easy Ancillaries

TRANSMISSION JACKS



FLOOR JACKS



AXLE STANDS



ADAPTOR FOR LIGHT VEHICLES



LIFTING BEAM FOR BUS AND COACH



safety seal
europe ab



EASYBALANCE is an environmentally friendly absorbent balancing powder that is placed directly inside truck and bus tyre. Due to its ability to re-distribute itself when the vehicle is in motion, it provides maximum tyre and wheel balance at all times, during the entire lifetime of the tyre.

The product has been available on the market since 1994 and has shown its ability in balancing vehicle tyres throughout Europe.

EASYBALANCE is sold in single-use packs of 100, 200, 300, 350 and 500 g, and in 7.5 kg buckets with a dosing scoop.



VIBRATOOL®

Vibratool is a measuring tool designed to examine and determine the cause of vibration in the undercarriage of vehicles. Vibratool easily detects vibrations on vehicles, it is a tool for fast, accurate troubleshooting, which gives you more time to repair or replace the damaged part at the vehicle. Very easy to operate: Mount, connect, drive and read the results.



It's easy to connect more hubs and sensors so you can use it on even a truck or bus. Connect up to 4 hubs and 8 sensors. The sensors are equipped with magnets which makes them easy to mount on the undercarriage of the vehicle. The acceleration sensors measure influences up to $\pm 2g$ on 3 axes (X, Y and Z).

Some of our valued clients



VOLVO



For more information please contact us today :



TriboTech
Instrumental for Accuracy

718, Swastik Chambers, 7th Floor, CST Road,
Chembur (East), Mumbai – 400 071.

Tel. +91 22 6799 7857 / 58 / 59

Sales and Queries : info@tribotechindia.com

Repairs and Services : services@tribotechindia.com

Website : www.tribotechindia.com

facebook : Tribotechindia