



Features:

- Advanced vibration tester with large measuring range
- Three display modes:
Special mode: displaying acceleration, velocity and displacement
Common mode: displaying one of acceleration, velocity and displacement
Spectrum mode: displaying vibration spectrum
- large memory up to 1550 readings and 25 spectrums
- Easy diagnosis: alarm is sounded when vibration go over limit set, and get into spectrum mode
- testing results and spectrum can be printed out with optional micro-printer
- can be connected with PC by special software for further analyses of vibration

Technical Specification

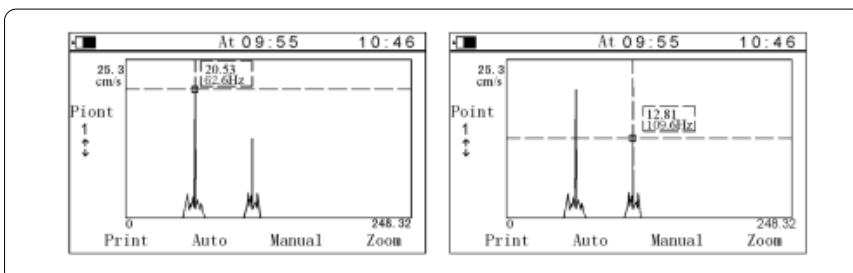
Testing range	Acceleration	0.1m/s ² -392m/s ² (peak value)
	Velocity	0.01cm/s-80cm/s (virtual value)
	Displacement	0.001mm-18.1mm (peak to peak value)
Frequency range	Acceleration	10Hz-200Hz, 10Hz-500Hz, 10Hz-1KHz, 10Hz-10KHz
	Velocity	10Hz-1KHz
	Displacement	10Hz -500Hz
Power	Li-ion rechargeable battery	
Display	LCD, 320 × 200 pixels with backlight	
Working temperature	0°C - 40°C	
Tolerance	± 5%	
Dimensions	171mm × 78.5mm × 28mm	
Weight	230g	

Standard Delivery

- Main unit 1
- Accelerometer probe 1
- Magnetic base 1
- Charger 1
- Protection Pocket 1
- TIME certificate 1
- Instruction manual 1
- Warranty card 1

Optional Accessory

- Needle groupware
- Long needle
- Printer TA230 (see page 47)
- Dataview software



VIBRATION TESTER TV300

Dataview for TV300

TV300 Data List				
Point	Time	Accelerate(g)	Velocity(cm/s)	Displace(mm)
1	2004-5-7 AM 09:34:50	184.8468	18.9249	1.0665
1	2004-5-12 AM 09:41:48	355.5558	37.3333	3.6444
1	2004-5-11 AM 09:41:18	278.7468	27.1948	2.9214
1	2004-5-10 AM 09:44:03	213.4925	22.9114	2.0829
1	2004-5-9 AM 09:01:16	173.1944	17.7222	1.6514
1	2004-5-8 AM 09:52:54	140.0274	13.3983	1.3684
1	2004-5-1 AM 09:38:42	78.4592	7.8237	0.7646
1	2004-5-6 AM 09:09:48	91.1111	9.7778	0.9889
1	2004-5-5 AM 09:38:44	81.6796	8.1677	0.8168
1	2004-5-4 AM 09:25:37	82.025	7.4823	0.8209
1	2004-5-3 AM 09:37:39	74.0278	7.2222	0.7944
1	2004-5-2 AM 09:27:48	74.8971	7.4897	



Print [X]

Table

Scope

Current

All

Preview Print

Graph

Kind

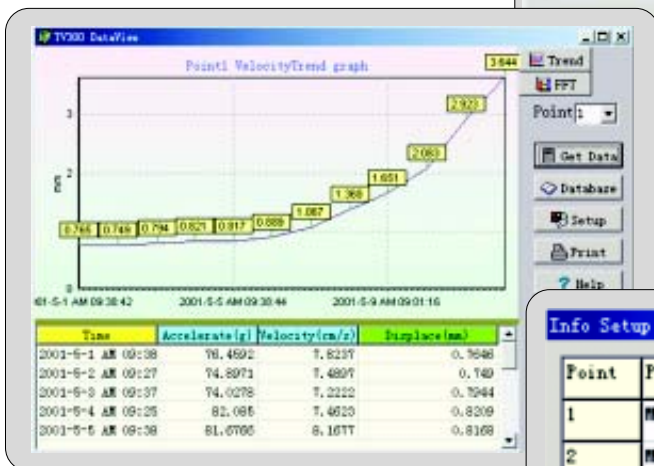
Trend

FFT

Background Color

Print

Printer setup Close



Info Setup [X]

Point	Point Name	Name
1	Motor 1 radial	<input type="text"/>
2	Motor 1 horizontal	<input type="text"/>
3	Motor 1 vertical	<input type="text"/>
4	Motor 2 radial	<input type="text"/>
5	Motor 2 horizontal	<input type="text"/>
6	Motor 2 vertical	<input type="text"/>
7	Motor 3 radial	<input type="text"/>

Response:

Copy Info