



# VIBER X5™



**Easy operation**

**Versatile and innovative**

**Super Fast and Powerful**

**Vast array of accessories**

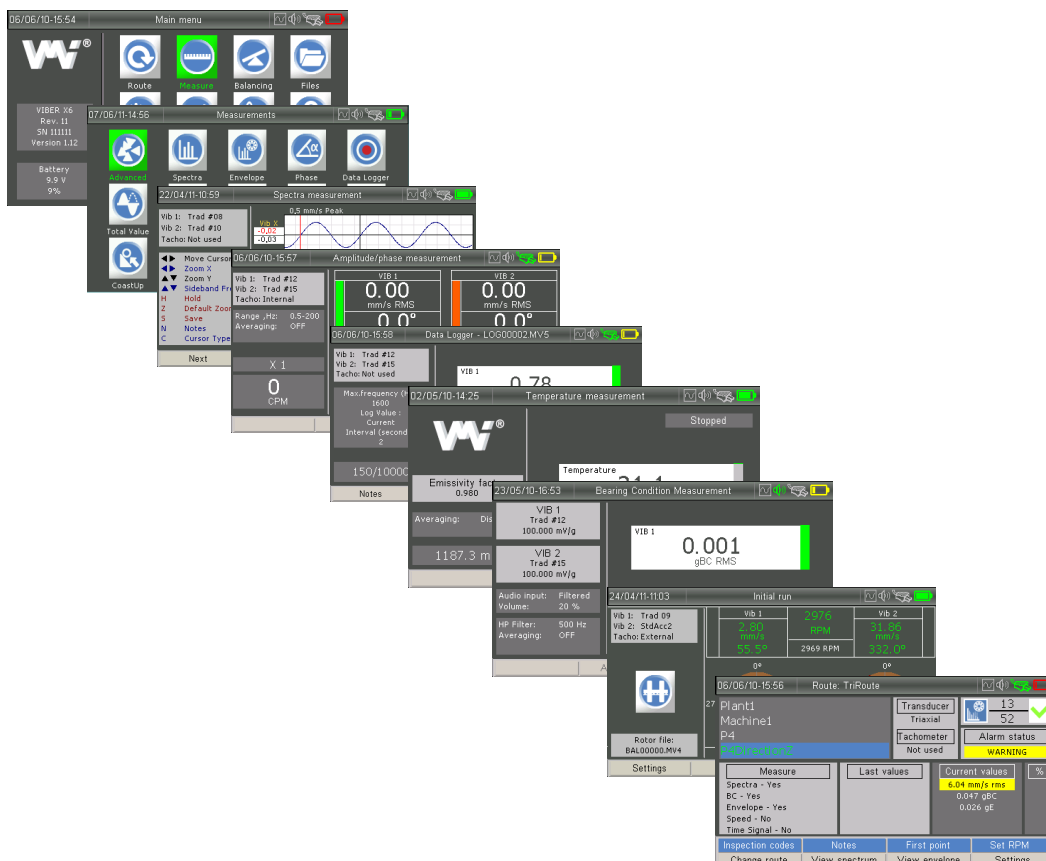
**Rugged and tight (IP65)**

**Unbeatable price VS performance ratio**

Additional software as an option. When buying a VIBER X5™ you can add features.

Included in the standard delivery are:

- ✓ 2 Accelerometers, VMI 192
- ✓ Internal IR temperature meter
- ✓ Possibility to listening to the bearings while measuring
- ✓ IP68 rugged carrying case
- ✓ Extension tip
- ✓ Desktop charger
- ✓ Hand straps for comfortable use
- ✓ USB cable for connection to a computer
- ✓ Free software update
- ✓ 2 year manufacturing warranty with possibility for extension up to 6 years
- ✓ One- and two- plane balancing
- ✓ Route based data collection
- ✓ Multimeter, process parameters
- ✓ Data logger for long-term recording
- ✓ Coast- down/- up
- ✓ Orbit
- ✓ Bearing condition
- ✓ Amplitude and Phase
- ✓ Envelope
- ✓ Spectra
- ✓ Waveform
- ✓ Temperature, built in IR transducer



## Technical details VIBER X5™

Digital	DSP Processor	Texas TMS320C6713B	
	Memory	Storage: 2 Gbyte micro SD card 128 MByte RAM 2*16 MBytes fast flash memory	<i>Minimum spec. Actual spec. is depending on hardware revision</i>
	ADC	6 channels, 16 bit, max 192 KSPS simultaneous sampling	
Display	Size & Resolution	4,3" Amorphous- TFT-LCD 480 x 272 pixels	
	Colors	65536	
Signals in/out	AC inputs	All standard ICP accelerometers (4mA/24V), velocimeters or general purpose AC transducers in range 0- 8 V RMS. Auxiliary input in range 0-30V RMS	<i>VMI default transducers are automatically recognized</i>
	DC input	0 to 5V	
	External reference	0,8 to 24 V	
Transducers	Temperature	-10 °C to 120 °C	<i>Infrared</i>
Measurements	Processing	Direct, single or double integrated or derivated (configured in software upon used transducer and user request). Up to both channels simultaneous sampling	
	Frequency range	0.5 to 25600 Hz	
	Amplitude range	0 to 80 g	<i>Depending on transducer used</i>
	Accuracy	0.01 g ± 1% for non integrated 0.1 mm/s ± 2% for single integrated 2 µm ± 3% for double integrated	
	FFT lines	25600	
	Sampling rate	Up to 131072 Hz depending of selected frequency range.	<i>Both channels simultaneous sampling</i>
	Windowing	Selectable: Hanning, Hamming, Blackmann, Kaiser-Bessel.	
Power	Accumulators	4200 mAh Ni-MH battery pack	
	Autonomy	10 hours typical use	
	Charging	4 hours typical charge time	
Temperature	Operating	-20° to +70° C (-4° to 158° F)	
	Storage	-30° to +80° C (-22° to 176° F)	

# The VIBER X5™ is the latest evolution building on the popular Easy Viber™. The X5 combines the extreme performance of the Texas Instrument DSP processor with the experience and popular features of the Easy Viber, all in a rugged heavy duty casing!

Some of all other user friendly features customers like about the Viber X5™:

*"The X5 starts within 2 seconds and always at the point or place where I stopped working"*

*"The route window is very well thought through and gives all information clear and visible"*

*"The situation based help menu give me fast response when I've forgotten something"*

*"With the internal non contact IR transducer there is now no reason to not measure temperature in route"*

*"We can use the same route for the X5 as for the EV, XV or X6"*

## Sample of Accessories:

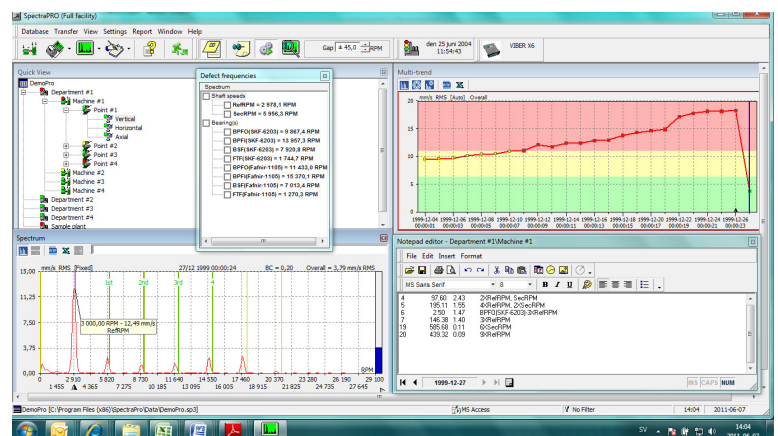
**Headphones.** With active Noise Cancelling but still possibility to listen/talk and hear alarms, ergonomic design.

**Balancing kit.** Including External laser tacho (0,5 to 250 000 CPM) with 5m cable, 2pcs 5m extension cables for transducers, fast and easy to setup magnet holder for the tacho, and a pocket scale. The Viber X5™ case is already precut to fit the Balancing kit items.

## SpectraPro analyzing and route software

Viber X5™ is designed to work together with SpectraPro, PC software for advanced vibration analysis.

- ➔ Create routes and set alarm levels. Viber X6™ may be used for the same routes as EasyViber™, X-Viber™, Viber X4™ and Viber X5™
- ➔ Simple database structure with templates and pictures
- ➔ Large bearing database (over 6000 pcs) with defect frequencies. Easy to add user specific bearings.
- ➔ Quick view, store your own array of windows for fast viewing
- ➔ Waterfall, last 5 spectra or choose your own
- ➔ Automatic reports, generate probable fault causes and work reports with a click of a button
- ➔ Network, multi user.
- ➔ Work with different level of access, let your colleagues, supervisor, customer etc have access to the plant status via low cost (non editable) graphical interface.
- ➔ And much, much more.....



### VMI International AB

Torsgränd 15  
SE-603 63 Norrköping, Sweden  
Tel. +46 11 311667 Fax. +46 11 311678  
E-mail: [info@vmiab.com](mailto:info@vmiab.com), [www.vmiab.com](http://www.vmiab.com)